

OPPLE



LED EcoMax T8 Plastic Batten

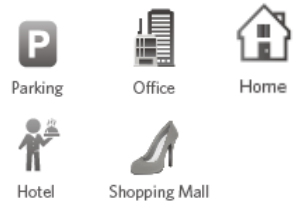
Features

1. High lumen efficacy, 88 lm/W
2. Plastic Unibody enclosure
3. Broad range of lengths and color temperatures

Benefits

1. Up to 60% energy savings compared to conventional T8 batten
2. No light leak, uniform light output
3. Easily retrofit conventional fixtures with LED

Applications



Specification

Product Description	Power (w)	Power Factor	Lumen (lm)	Efficiency (lm/w)	CRI	CCT (K)	Average Lifetime(hrs)	Energy Level
LED-E-T8 batten-600mm-8W-3000K-CT	8	0.5	700	88	75	3000	20000	A+
LED-E-T8 batten-600mm-8W-4000K-CT	8	0.5	700	88	75	4000	20000	A+
LED-E-T8 batten-600mm-8W-6500K-CT	8	0.5	700	88	75	6500	20000	A+
LED-E-T8 batten-900mm-12W-3000K-CT	12	0.5	1050	88	75	3000	20000	A+
LED-E-T8 batten-900mm-12W-4000K-CT	12	0.5	1050	88	75	4000	20000	A+
LED-E-T8 batten-900mm-12W-6500K-CT	12	0.5	1050	88	75	6500	20000	A+
LED-E-T8 batten-1200mm-16W-3000K-CT	16	0.5	1400	88	75	3000	20000	A+
LED-E-T8 batten-1200mm-16W-4000K-CT	16	0.5	1400	88	75	4000	20000	A+
LED-E-T8 batten-1200mm-16W-6500K-CT	16	0.5	1400	88	75	6500	20000	A+

Application Conditions

IP	20
Operating Temperature	-10-+40°C
Application Temperature	25°C
Storage Temperature	-10-+50°C

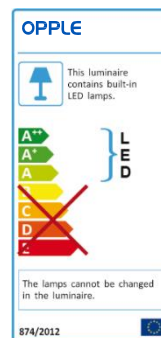
Mechanical Finishing Properties

Optical Material	PC
Housing Material	PC
Finishing Color	White

Electrical Supply

Frequency(Hz)	50/60Hz
Voltage(V)	220-240V~
AC/DC	AC

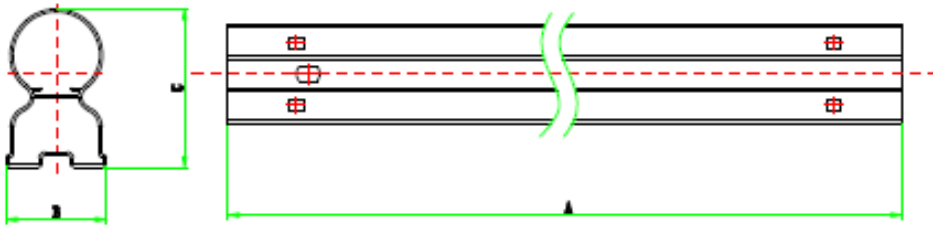
CE CB



Packing information

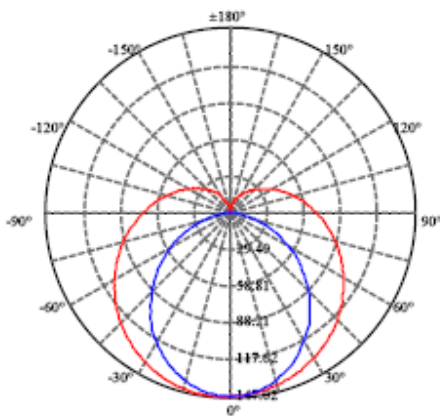
Product Description	Single Box (1pcs/box)		Packing Unit		
	Dimensions(mm) (HXWXL)	Gross Weight (kg)	Dimensions(mm) (HXWXL)	Gross Weight (kg)	Packing QTY (pcs/CTN)
LED-E-T8 batten-600mm-8W-3000K-CT	48*33*620	0.200	220*255*630	6.00	30
LED-E-T8 batten-600mm-8W-4000K-CT	48*33*620	0.200	220*255*630	6.00	30
LED-E-T8 batten-600mm-8W-6500K-CT	48*33*620	0.200	220*255*630	6.00	30
LED-E-T8 batten-900mm-12W-3000K-CT	48*33*920	0.207	220*255*930	6.21	30
LED-E-T8 batten-900mm-12W-4000K-CT	48*33*920	0.207	220*255*930	6.21	30
LED-E-T8 batten-900mm-12W-6500K-CT	48*33*920	0.207	220*255*930	6.21	30
LED-E-T8 batten-1200mm-16W-3000K-CT	48*33*1220	0.339	220*255*1230	10.17	30
LED-E-T8 batten-1200mm-16W-4000K-CT	48*33*1220	0.339	220*255*1230	10.17	30
LED-E-T8 batten-1200mm-16W-6500K-CT	48*33*1220	0.339	220*255*1230	10.17	30

Dimensional Drawing

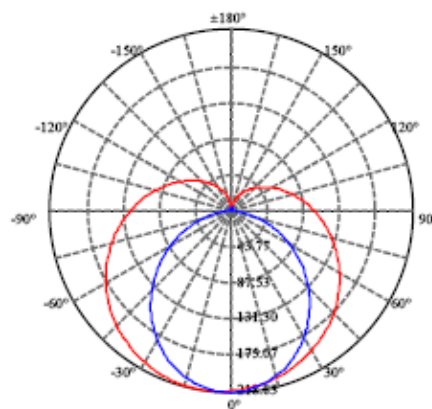


	8W	12W	16W
A(mm)	600	900	1200
B(mm)	28	28	28
C(mm)	44	44	44

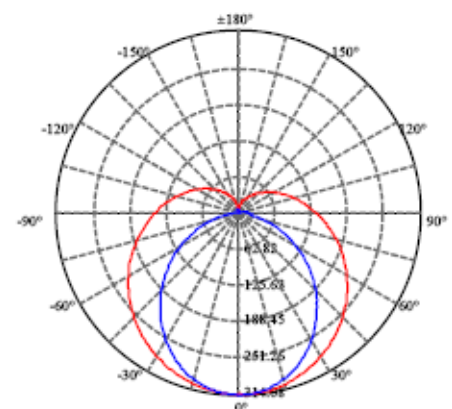
Light Distribution



8W



12W



16W

OPPLE SHANGHAI OFFICE
 1999 Zhangheng Road, Building 3
 Shanghai 201203 China

T +86 21 3855 0000
E intersales@opple.com

OPPLE.COM