

IP65 BOLLARD

VTS-OLG105R / OLG105S

Features:

- IP55/IP65 protection for OLG-105 LED compartment, round and square module LED light head
- OLG-105 can be installed as bollard light on the concrete ground with ACO accessory
- Diecasting body with LED technology providing long life time and low maintenance cost
- Built-in LED driver, easy for installation
- Anti-dazzle shield light head with two-sided symmetrical light distribution for a trendy visual effect

Application:

OLG series are good for bollard and wall mounted application. Perfect outdoor luminaire for private house and garden.

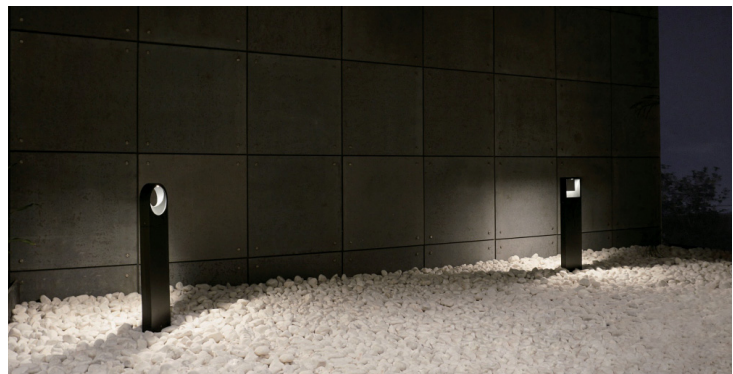
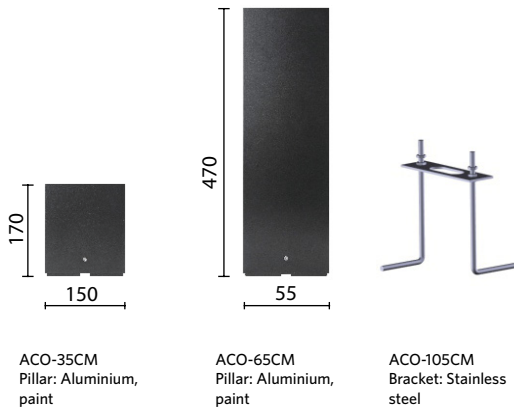
MATERIAL

HOUSING

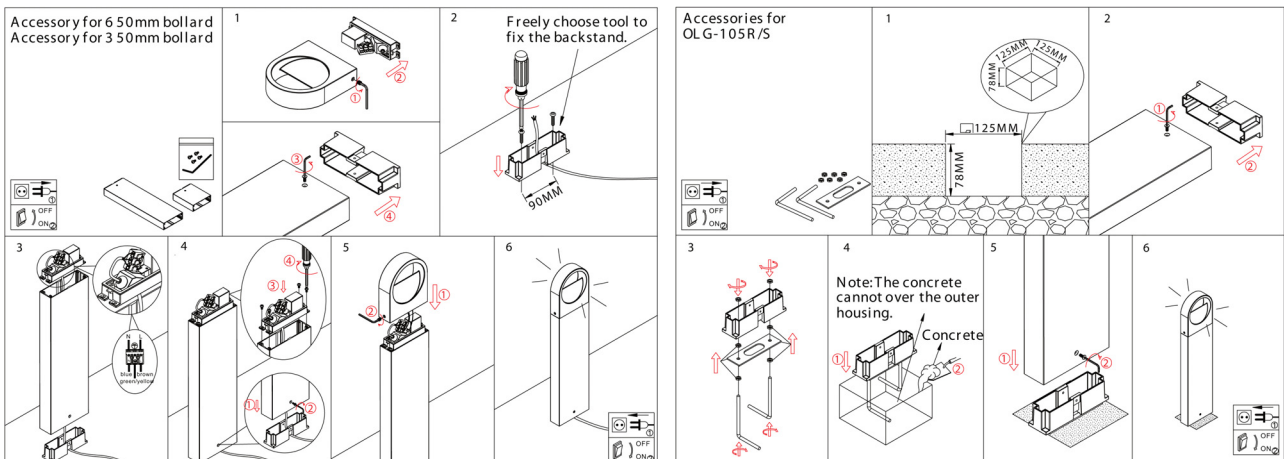
Aluminum, paint



PILLAR FOR GROUND MOUNTED



INSTRUCTION



IP65 BOLLARD

VTS-OLG105R

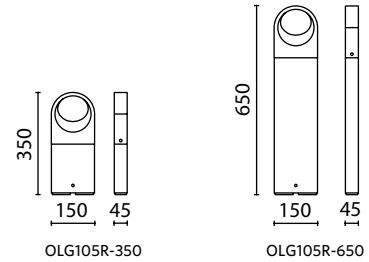


IP65 for LED compartment

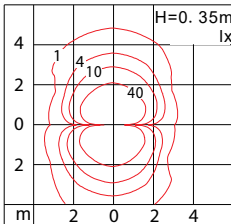
Input: High Voltage without Cable Outlet



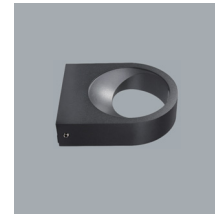
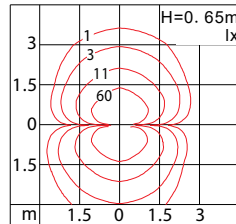
**LED Power: 6w
350mA, 14V**
Lamp Source: CITIZEN CoB
3000K/4000K
800 lm (luminaire output)
Finished color:
White/Black/Grey



CoB 800lm 350mA WW



CoB 800lm 350mA WW



Wall mounted Pg. 278

VTS-OLG105S

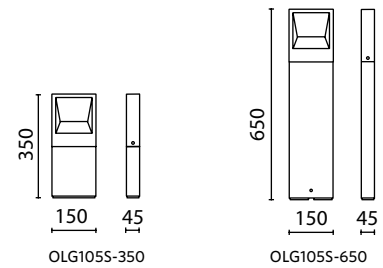


IP65 for LED compartment

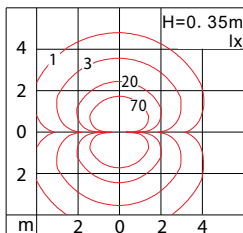
Input: High Voltage without Cable Outlet



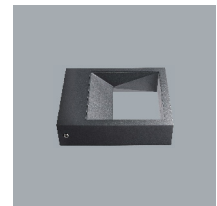
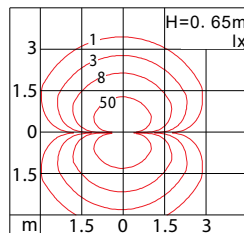
**LED Power: 6w
350mA, 14V**
Lamp Source: CITIZEN CoB
3000K/4000K
800 lm (luminaire output)
Finished color:
White/Black/Grey



CoB 800lm 350mA WW



CoB 800lm 350mA WW



Wall mounted Pg. 279

Ordering Code: VTS - V - ZZZ - CC

Example: **VLCZ-OLG105R-350-830-BK**

V = OLG105R-350, OLG105R-650, OLG105S-350, OLG105S-650

ZZZ = the code for color rendering and color temperature, eg. **827** = CRI >83 and CCT - 2700K; **830** = CRI >83 and CCT - 3000K; **840** = CRI >83 and CCT - 4000K.

CC is Fixture Color, **BK** = Black, **WH** = White, **GR** = Grey