

**IP54 ANTI-GLARE DOWN LIGHT | Round | Recessed**

**VFDSC-040-RZ**

IP54



**CRI 85**

UGR <19



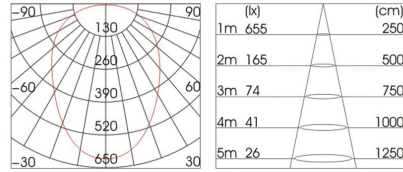
**8W SAMSUNG**  
 2700K-6500K  
**650 lm (lumen output)**  
 180-240V, 50/60Hz  
 Beam Angle: 70°  
 Cutting hole: Ø80mm  
 Dimension: Ø90 x H80mm



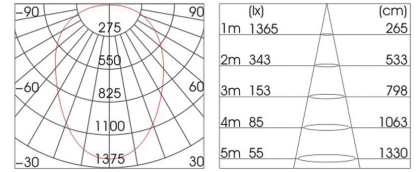
**16W SAMSUNG**  
 2700K-6500K  
**1300 lm (lumen output)**  
 180-240V, 50/60Hz  
 Beam Angle: 70°  
 Cutting hole: Ø105mm  
 Dimension: Ø114mm x H85mm



SAMSUNG 8W 3000K 70°



SAMSUNG 16W 3000K 70°



External LED Driver  
 Trim : Die-cast aluminium  
 Body : Die-cast aluminium



**Ordering Code: VFDS-040-RZ- XXW - ZZZ - AA**

Example: VFDS-040-RZ-16W-830-DA

**XX** = (Watt) e.g. 8w, 16w, 24w

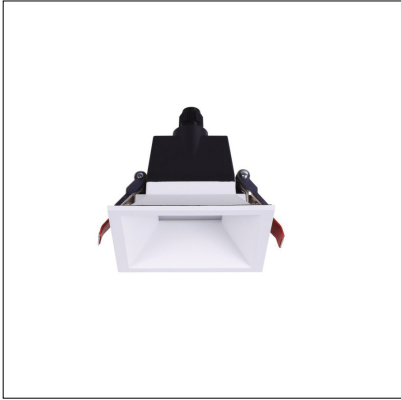
**ZZZ** = the code for color rendering and color temperature, eg.  
**827** = CRI >80 and CCT - 2700K; **830** = CRI >80 and CCT - 3000K; **840** = CRI >80 and CCT - 4000K

**AA** is the dimming requirements = **ND** for non dim, **DA** for DALI, **AN** for 0-10V, **TR** for Trailing edge dimming

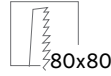
IP54 ANTI-GLARE DOWN LIGHT | Square | Recessed

**VFDS-040S**

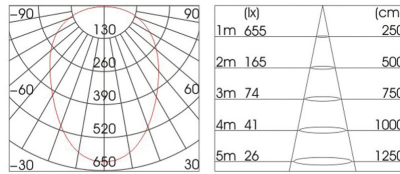
IP54 |  |  | UGR <19



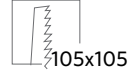
**8W SAMSUNG**  
2700K-6500K  
**650 lm (lumen output)**  
180-240V, 50/60Hz  
Beam Angle: 70°  
Cutting hole: 80 x 80mm  
Dimension: 90 x 90 x H85mm



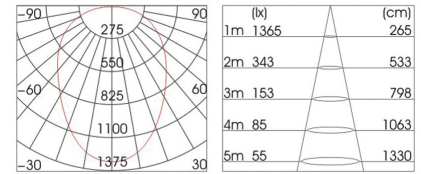
SAMSUNG 8W 3000K 70°



**16W SAMSUNG**  
2700K-6500K  
**1300 lm (lumen output)**  
180-240V, 50/60Hz  
Beam Angle: 70°  
Cutting hole: 105 x 105mm  
Dimension: 114 x 114 x H85mm



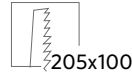
SAMSUNG 16W 3000K 70°



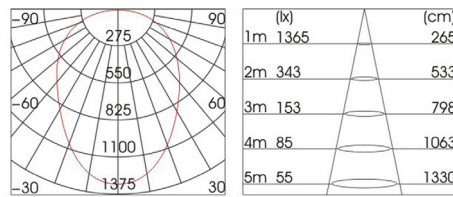
External LED Driver  
Trim : Die-cast aluminium  
Body : Die-cast aluminium



**24W SAMSUNG**  
2700K-6500K  
**2400 lm (lumen output)**  
180-240V, 50/60Hz  
Beam Angle: 70°  
Cutting hole: 205 x 100mm  
Dimension: 220 x 114 x H85mm



SAMSUNG 24W 3000K 70°



External LED Driver  
Trim : Die-cast aluminium  
Body : Die-cast aluminium

**Ordering Code: VFDS040S- XXW - ZZZ - AA**

Example: VFDS-040S-16W-830-DA

**XX** = (Watt) e.g. 8w, 16w, 24w

**ZZZ** = the code for color rendering and color temperature, eg.  
**827** = CRI >80 and CCT - 2700K; **830** = CRI >80 and CCT - 3000K; **840** = CRI >80 and CCT - 4000K

**AA** is the dimming requirements = **ND** for non dim,  
**DA** for DALI, **AN** for 0-10V, **TR** for Trailing edge dimming